



Series 2000 Digital Panel Meters

FEATURES

- ** 1/8 DIN Case
- ** NEMA 4, NEMA 12, and IPC 55 Splash and hose-down proof for outside, dairy, food, pharmaceutical, petrochemical, and other process applications.
- ** Shallow Depth, only 1" to 2" behind the panel
- ** Backlit LCD displays offers the advantage of readability in sunlight or under bright lights.
- ** Built-in screw terminal connector
- ** Field Adjustable without opening the case

DC Current and Voltage



Ordering Information

2 0 3 3 - 3 4 0 2 - 0 4

DISPLAY

- 1 = Non Backlit
- 3 = Positive Green Backlit
- 5 = Negative Red Backlit

DPM POWER *

- 4 = 115 VAC
- 5 = 230 VAC
- 6 = 10 to 28 VDC
- 7 = 12 or 24 VDC (Isolated)

* Backlit power must be the same as the selected DPM power

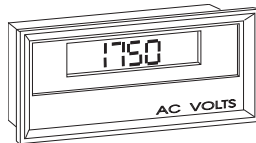
BACKLIT POWER *

- 00 = No Backlight
- 04 = 115 VAC
- 05 = 230 VAC
- 06 = 10 to 28 VDC
- 07 = 12 or 24 VDC

INPUT

- 01 = 200 mV DC
- 02 = 2 VDC
- 03 = 20 VDC
- 04 = 200 VDC
- 10 = 200 uA DC
- 11 = 2 mA DC
- 12 = 20 mA DC
- 13 = 200 mA DC

AC Voltage and Current (Average Responding)



Ordering Information

2 0 3 3 - 3 4 3 8 - 0 4 2

DISPLAY

- 1 = Non Backlit
- 3 = Positive Green Backlit
- 5 = Negative Red Backlit

DPM POWER *

- 4 = 115 VAC
- 5 = 230 VAC
- 7 = 12 or 24 VDC (Isolated)

INPUT

- 28 = 80.0-130.0VAC
- 29 = 80-260VAC
- 38 = 0-5AAC**
- 39 = 0-50AAC**

BACKLIT POWER *

- 00 = No Backlight
- 04 = 115VAC
- 05 = 230VAC
- 07 = 12 or 24 VDC

DISPLAY ***

- 1 = 2000
- 2 = 1500
- 3 = 1000
- 4 = 600
- 5 = 500
- 6 = 300
- 7 = 200
- 8 = 100

* Backlit power must be the same as the selected DPM power

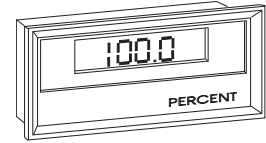
** Rated for use with 5A or 50A external current transformer supplied with DPM.

*** For 5A current transformer inputs only. 10.1 volt resolution.

Loop Powered Process meter

FEATURES

- ** Self Powered from 4-20mA control loop
- ** 3 1/2 digits, 0.5" high
- ** User Selectable decimal point on terminal strip.
- ** Zero and span adjustments easily accessible at rear of case.
- ** Low loop drop, only 2.2V max.



Ranging:

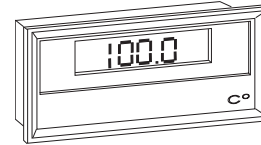
Full Scale Adjustments: 4 Coarse ranges set by jumper plug
 100-250 Counts
 250-500 Counts
 500-1000 Counts
 1000-1999 Counts

Fine span adjusted by 15 turn potentiometer

Zero Adjustments: ±10% of full scale setting by 15 turn potentiometer

To order specify No. 2013-3019-00

Temperature - Thermocouple Input



Ordering Information

2 0 3 3 - 3 4 8 0 - 0 4

DISPLAY

- 1 = Non Backlit
- 3 = Positive Green Backlit
- 5 = Negative Red Backlit

DPM POWER *

- 4 = 115 VAC
- 5 = 230 VAC

BACKLIT POWER *

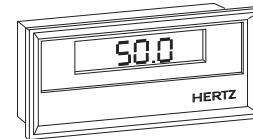
- 00 = No Backlight
- 04 = 115 VAC
- 05 = 230 VAC

INPUT

- 80 = Type J
- 81 = Type K
- 82 = Type T

* Backlit power must be the same as the selected DPM power

Line Frequency Monitor



Ordering Information

2 0 3 3 - 3 4 6 0 - 0 4

DISPLAY

- 1 = Non Backlit
- 3 = Positive Green Backlit
- 5 = Negative Red Backlit

DPM POWER *

- 4 = 115 VAC
- 5 = 230 VAC
- 7 = 12 or 24 VDC (Isolated)

BACKLIT POWER *

- 00 = No Backlight
- 04 = 115 VAC
- 05 = 230 VAC
- 07 = 12 or 24 VDC

INPUT

- 60 = 40 to 440 Hz
- 61 = 40.0 to 199.9Hz

* Backlit power must be the same as the selected DPM power