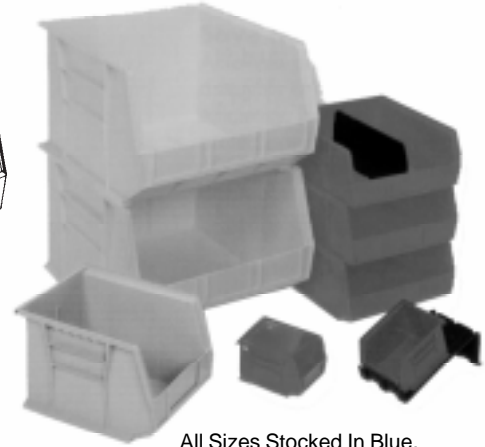
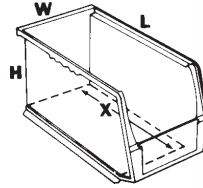


AKROBINS POLYPROPYLENE STORAGE BINS THAT HANG OR STACK

FEATURES

- AkroBins hang securely from louvered panels.
- Extra-Wide stacking ledge assures secure stacking.
- Anti-slide stop prevents loaded bins from shifting forward when stacked.
- Large label slot for clear identification.
- Reinforcing ribs prevent bins from spreading when loaded.
- Finger grips allow easy handling.
- Seven Different Sizes.
- Three different colors.
- Specify Red, Blue, Stone or Yellow



All Sizes Stocked In Blue.

Stock Number	Outside Dimen. In			Inside Dimen. In				Price	Dividers	Cost Per Pkg of 6
	L.	W.	H.	L.	W.	H.	X.			
30-210	5 3/8	4 1/8	3	4 3/4	3 7/16	2 13/16	4	\$1.00	40-210	\$4.43
30-220	7 3/8	4 1/8	3	6 3/4	3 7/16	2 13/16	6	1.82	40-220	4.77
30-230	10 7/8	5 1/2	5	10 1/4	4 3/8	4 3/4	9	4.52	40-230	8.07
30-235	10 7/8	11	5	10 1/4	10	4 3/4	9	6.96	40-230	8.07
30-239	10 3/4	8 1/4	7	10	6 9/16	6 3/4	8	7.52	40-239	9.16
30-240	14 3/4	8 1/4	7	14	6 9/16	6 3/4	12	8.90	40-245	11.16
30-250	14 3/4	16 1/2	7	14	14 3/4	6 3/4	12	12.50	40-245	11.16
30-265	18	8 1/4	9	17 1/8	6 3/4	8 1/4	14 1/2	14.89	40-265	19.90
30-270	18	16 1/2	11	14 1/8	14 3/4	10 1/4	13 3/4	22.53	40-270	21.57
30-224*	10 7/8	4 3/16	4	10 1/4	3 3/16	3 3/4	9	* Available Fall 1998 call for pricing.		
30-234*	14 3/4	5 1/2	5	14 1/16	4 3/8	4 3/4	12 13/16			
30-255*	10 3/4	16 1/2	5	9 3/4	16	4 3/4	8 1/2			

1800 SERIES AKROBINS

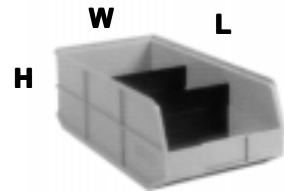
FEATURES

- Reinforcing Ribs for extra strength.
- Extra wide stacking ledge
- Cross-wise dividers
- Front and back finger grips
- Curved bottom at hopper front
- Large label slot

Extra large and Extra strong for heavier bulkier parts

Stock Number	Price	Inside Dimen. In			Outside Dimen. In			Ctn. Qty.	Dividers	Price
		L.	W.	H.	L.	W.	H.			
30-348	\$13.52	20	7 3/8	6 1/2	20 1/2	8 1/4	7	6	40-348	\$6.96
30-358	19.03	20	10 1/8	6 1/2	20 1/2	11	7	6	40-358	10.23

Available in light beige only. Order in carton Quantities.



Shown with dividers sold separately

NEW PRODUCT!

**ESD CONTAINERS
AkroBins - Shelf Bins - ModuBoxes
WITH CARMELSTAT™**

ESD AkroBins

All the Features of the AkroBin. Now in ESD!



Safely and securely handles all of your sensitive electronic components Control inventories, shorten assembly times and minimize parts handling. ESD AkroBins are unaffected by weak acids and alkalis. Sturdy one-piece construction is water, rust and corrosion proof. Guaranteed not to break

ESD Shelf Bins

Designed To Work With Existing Shelving



Shelf Bins Provide and economical solution to electronic component Storage problems. Works with 12", 18" and 24" deep shelving or vertical storage units. The one-piece construction is waterproof and unaffected by grease or oil

ESD Moduboxes

Protect Electronic Components with Individualized Compartments



Durable ESD Moduboxes are perfect for the transfer and storage of sensitive electronic components. Built in divider slots allow the container to be sub-divided into smaller sections, perfect for organizing small to medium parts.

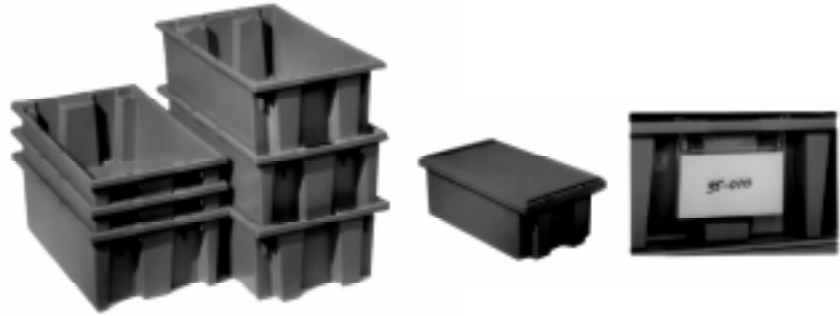
Now available at Carlton-Bates Company. Please call for more information.

AKRO-N.S.T

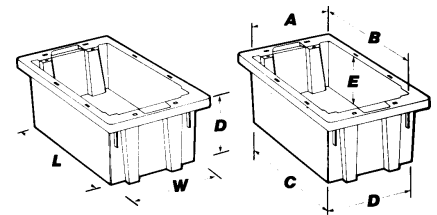
Nest ,Stack, Tote containers

FEATURES

- Containers nest and stack.
- Molded of high density polyethylene, FDA approved.
- Won't rust , corrode or bend out of shape.
- Comfortable grab handles for easy carrying.
- Available in red, blue and gray. Lids Optional.



Stock Number	Price	Outside Dimensions Inches			Inside Dimensions Inches					Capacity Cu.Ft.	Ctn. Qty.	Lid Stock Number	Price
		L.	W.	H.	A.	B.	C.	D.	E.				
35-180	\$10.19	18	11	6	10	16	15 1/4	9 3/8	5 7/8	.5	6	35-181	\$6.33
35-190	19.00	19 1/2	15 1/2	10	14 1/2	17	16	13 1/4	9 7/8	1.2	6	35-191	8.52
35-200	16.73	19 1/2	13 1/2	8	12 3/8	17 1/2	16 3/8	11 1/4	7 7/8	.8	6	35-201	9.46
35-230	28.53	23 1/2	19 1/2	13	18 1/8	20 7/8	19 1/2	16 7/8	12 7/8	2.6	3	35-231	12.66
35-240	25.93	23 1/2	15 1/2	12	14 1/4	20 7/8	19 5/8	13	11 7/8	1.7	3	35-241	13.34
35-300	49.01	29 1/2	19 1/2	15	18 1/4	26 5/8	25 1/8	16 5/8	14 7/8	3.7	3	35-301	19.15
35-185*	*Call	18	11	9	10	16	15 1/8	9 1/8	8 7/8	.76	6	35-181*	*Call
35-195*	for	19 1/2	15 1/2	13	14 1/2	17	15 7/8	13 3/8	12 7/8	1.73	6	35-191*	for
35-225*	Price	23 1/2	19 1/2	10	18 1/4	20 7/8	19 3/8	16 7/8	9 7/8	2.00	6	35-231*	Price
35-010	7.29	Label holder fits all sizes Akro N.S.T.											



AKRO - S.W.C.'s

Manufacture, transport, and store products cost effectively with new S.W.C.'s from Akro-Mils.

FEATURES

- High density polyethylene construction
- All four sizes of containers stack together
- Ergonomically designed hand holes
- Straight container walls allow efficient cubing
- Strong stacking rims and external ribbing provide added strength
- Available on four styles:
 - Open mesh sides and / or bottoms
 - Solid sides and bottoms
- One piece aluminum frame dolly now available
 - Works with all sizes of Akro-S.W.C.
- Comes assembled with swivel wheels
- Capacity 500 lbs / 226.8kg



Stock Number	Description	Dimensions Inches	Price
37-208	Mesh Side / Base	16 x 12 x 8	\$10.98
37-278	Mesh Side / Solid Base	16 x 12 x 8	12.17
27-288	Solid Side / Base	16 x 12 x 8	11.64
27-298	Solid Side / Mesh Base	16 x 12 x 8	12.66
37-608	Mesh Side / Base	24 x 16 x 8	16.01
37-678	Mesh Side / Solid Base	24 x 16 x 8	19.29
37-688	Solid Side / Base	24 x 16 x 8	17.54
37-698	Solid Side / Mesh Base	24 x 16+ x 8	17.76
37-612	Mesh Side / Base	24 x 16 x 12	17.25
37-672	Mesh Side / Solid Base	24 x 16 x 12	23.66
37-682	Solid Side / Base	24 x 16 x 12	23.09
37-692	Solid Side / Mesh Base	24 x 16 x 12	19.59
37-616	Mesh Side / Base	24 x 16 x 16	20.10
37-676	Mesh Side / Solid Base	24 x 16 x 16	25.62
37-686	Solid Side / Base	24 x 16 x 16	27.46
37-396	Solid Side / Mesh Base	24 x 16 x 16	22.65
37-100	Aluminum Frame Dolly	24 x 16	117.41



1900 SERIES

Each cabinet is made of strong welded steel to provide years of service. Tough plastic drawers with transparent window lets you view their contents instantly. All series 1900 cabinets are the same size: 17" wide, 11" deep, and 11" high and are designed to stack with one another.

FEATURES

- Finger-grip drawer fronts for easy opening.
- Windowed drawers with molded-in label holders.
- Drawer dividers included.
- Key-hole slots for easy mounting.
- Built-in nesting feet for safe stacking.



Stock Number	Price	Description	Drawers Per Cabinet	Drawer Dimensions Inside Inches			**Dividers	Drawer Stock Number
				H.	W.	D.		
19-109	\$104.25	Security Cabinet with locking door	9	5 ³ / ₁₆	3 ¹ / ₁₆	10 ⁹ / ₁₆	40-909	20-909
19-909	77.13	Modular Cabinet	9	5 ³ / ₁₆	3 ¹ / ₁₆	10 ⁹ / ₁₆	40-909	20-909
19-715	77.13	Modular Cabinet	15	3 ³ / ₁₆	3 ¹ / ₁₆	10 ⁹ / ₁₆	40-715	20-715
19-416	77.13	Modular Cabinet	16	4	2 ¹ / ₈	10 ⁹ / ₁₆	40-416	20-416
19-320	77.13	Modular Cabinet	20	3 ³ / ₁₆	2 ¹ / ₈	10 ⁹ / ₁₆	40-320	20-320
19-228	77.13	Modular Cabinet	28	2 ³ / ₁₆	2 ¹ / ₁₆	10 ⁹ / ₁₆	40-228	20-228

** 2 Dividers and 1 label are furnished per drawer. Additional dividers and labels can be ordered by the package. ^All cabinets are available with locking door when ordered in quantities of 50 or more.



STORAGE-GO-ROUND

This rotating storage system is designed to store and organize thousands of items-up to 1/2 ton of parts, tools and products in less than one square yard of floor space. Unit consists of a turntable base and stabilizer clips and allows you to combine up to twenty 1900 Series Modular cabinets. (shown above).

Stock Number	Price	Description	Size (Inches)		
			W.	H.	D.
98-325	\$457.67	Rotating base & Stabilizer Clips	29	60	29

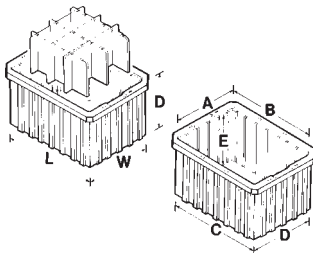
Does not include modular cabinets.

AKRO-GRID

Dividable containers may be divided into compartments as small as 1-1/4 inches square. Dividers, clear plastic lids and label holders optional. Containers available in red, blue, and gray.

FEATURES

- Dividable on 1-1/4 inch centers
- Recessed stacking leadges let you stack containers without damaging contents
- Injection molded of durable polyethylene.
- Compatible with most racks, shelving and automated material handling equipment.
- Available in red, blue, and grey. Dividers black only.



Stock Number	Price	Outside Dimensions Inches			Inside Dimensions Inches					Cnt. Qty.
		L.	W.	D.	A.	B.	C.	D.	E.	
33-105	\$5.43	10 ⁷ / ₈	8 ¹ / ₄	5	6 ¹¹ / ₁₆	9 ⁵ / ₁₆	9 ¹ / ₈	6 ¹ / ₂	4 ⁵ / ₈	20
33-166	9.79	16 ¹ / ₂	10 ⁷ / ₈	6	9 ⁵ / ₁₆	14 ⁷ / ₈	14 ³ / ₄	9 ¹ / ₈	5 ⁹ / ₁₆	8
33-168	11.52	16 ¹ / ₂	10 ⁷ / ₈	8	9 ⁹ / ₁₆	14 ¹⁵ / ₁₆	14 ⁵ / ₈	9 ¹ / ₁₆	7 ⁹ / ₁₆	6
33-228	18.82	22 ³ / ₄	17 ³ / ₈	8	15 ¹ / ₈	20 ¹ / ₈	19 ⁷ / ₈	14 ⁷ / ₈	7 ⁷ / ₁₆	3



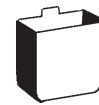
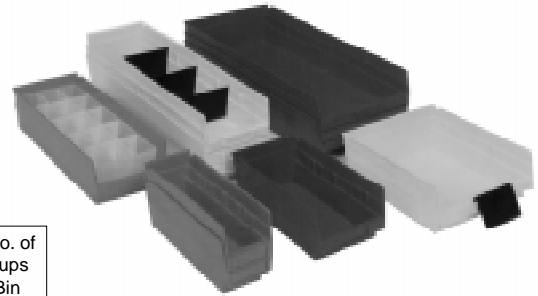
Intersecting Dividers Available

Stock Number	Price	Description	Fits Box No.	Ctn. Qty.
33-101	\$3.90	Lid	Fits 33-105	10
41-105	4.68	Short Divider	Fits 33-105	6
42-105	4.99	Long Divider	Fits 33-105	6
33-161	6.08	Lid	Fits 33-166	4
41-166	8.04	Short Divider	Fits 33-166	6
42-166	9.67	Long Divider	Fits 33-166	6
33-161	6.08	Lid	Fits 33-168	4
41-168	11.57	Short Divider	Fits 33-168	6
42-168	11.57	Long Divider	Fits 33-168	6
33-221	9.75	Lid	Fits 33-228	3
41-228	15.37	Short Divider	Fits 33-228	6
42-228	17.28	Long Divider	Fits 33-228	6
35-010	9.85	Lable Holder	Fits All Akro-Grids	6

Economy bins for 12", 18" and 24" deep shelving or automated storage and retrieval units. Choose from 13 different sizes and 3 different colors. Bin cups and dividers are also available see chart below

FEATURES.

- Molded of durable polypropylene for years of service.
- Special built-in hanglock allows easy access to the entire bin.
- Available in Red, Yellow and Blue.



30-101 - Bin Cups
(3-1/4" x 2" x 3")
\$0.25 Each

Stock Number	Outside Dimensions Inches			Inside Dimensions Inches			Cost Each	Package of 24 Dividers	Cost Each Package	Max No. of Bin Cups per Bin
	W.	H.	L.	W.	H.	L.				
30-110	2 3/4	4	11 5/8	1 5/8	4	10 1/4	\$1.02	None	\$5.32	3
30-120	4 1/8	4	11 5/8	3	4	10 1/4	1.12	40-120	5.32	5
30-124	4 1/8	4	23 5/8	3	4	22 1/8	2.98	40-120	5.32	11
30-128	4 1/8	4	17 7/8	3	4	16 1/2	1.52	40-120	5.32	8
30-130	6 5/8	4	11 5/8	5 1/2	4	10 1/4	1.75	40-130	5.77	9
30-138	6 5/8	4	17 7/8	5 1/2	4	16 1/2	2.15	40-130	5.77	15
30-150	8 3/8	4	11 5/8	7 1/8	4	10 1/4	1.91	40-150	13.45	11
30-158	8 3/8	4	17 7/8	7 1/8	4	16 1/2	2.95	40-150	13.45	18
30-164	6 5/8	4	23 5/8	5 1/2	4	22 1/2	4.31	40-130	5.77	21
30-170	11 1/8	4	11 5/8	10	4	10 1/4	2.98	40-170	16.96	15
30-174	11 1/8	4	23 5/8	10	4	22 1/8	6.42	40-170	16.96	35
30-178	11 1/8	4	17 5/8	10	4	16 1/2	4.69	40-170	16.96	25
30-184	8 3/8	4	23 5/8	7 1/8	4	22 1/8	5.23	40-150	13.45	25

One color per carton . Specify color Red, Yellow or Blue.

SHELF BIN RACK

The Shelf Bin Rack features cold rolled steel construction with a durable baked enamel finish. Each shelf holds up to 50 lbs. The tilt design means fast picking.

Bin Stock Number	Dimensions	Price
30-312	32-1/2L x 12W x 23H	\$67.45



BASIC SMALL-ITEM STORAGE.

Utility Boxes offer a variety of interior compartment configurations with adjustable and removable dividers (except 05-506). Lids snap securely closed to prevent spills. Available in 3 sizes.

1. Adjustable and removable dividers.
2. Snap-tight lids provide secure transport.
3. "See through" case allows you to locate items fast.



Model Number	Number of Compartments	Inches			Carton Quantity	Price
		L	W	H		
05-206	6 equal	4-5/8	3	1-3/16	12	\$1.05
05-406	6-18	8-5/16	4-5/8	1-3/8	12	3.12
05-505	5-15	11	6-1/2	2-1/4	6	5.22

COMBINATION SMALL AND LARGER PARTS STORAGE

Separate lid compartment holds small items. When lid is shut a unique lid design traps contents in place to keep items from gravitating to other compartments. The main compartment holds larger items. Available in two sizes. Organizers are blue with clear lids and black latches.

1. Adjustable and removable dividers provide flexibility.
2. Snap locks compartments securely.
3. Carrying handle for easy portability.
4. "See through" case allows you to locate items fast.

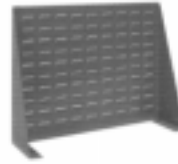


Model Number	Number of Compartments	Inches			Carton Quantity	Price
		L	W	H		
06-115	11-46	15	11-5/16	3-1/4	1	\$8.27
06-118	12-62	18-1/4	13-3/8	3/5/8	1	9.66

FEATURES

- Baked Enamel Finish.
- Horizontal Ribs for added strength.
- Accept all sizes of AKRO-BINS
- Slotted holes for easy mounting.
- 16 Gauge cold rolled steel construction

30-636 Louvered Panel
 35 3/4" L x 19" H
 \$ 24.38



Bins sold separately.

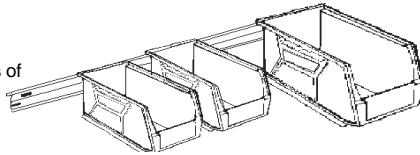
Bin Load Capacity When Attached to Panels

Bin No	30-210	30-220	30-230	30-235	30-239	30-240	30-250
Capacity	10 lbs.	10 lbs.	30 lbs	60 lbs.	50 lbs.	60 lbs.	75 lbs.

30-148 Steel Rail

48" L x 3" H

Wall-mounted unit accepts 4 sizes of Akro-bins (up to 11 bins).
 \$ 16.28



98-600 Bench Rack

27 3/4" L x 8" W x 21" H
 Bench-top model accepts
 3 sizes of Akrobins.
 \$36.18



Stock Number	Price	Description	Inside Dimen. In			Quantity of bins to fit Louvered Equipment AkroBin Model Number.							
			L.	W.	H.	30-210	30-220	30-230	30-235	30-239	30-240	30-250	
30-618	\$20.28	Louvered Panel	18		19	16	16	9					
30-636	28.30	Louvered Panel	35 3/4		19	32	32	18	9	8	8	4	
30-636	28.30	2 Louvered Panels	35 3/4		37	72	72	36	18	16	16	8	
30-636	28.30	3 Louvered Panels	35 3/4		55	104	104	54	27	28	28	14	
30-636	28.30	4 Louvered Panels	35 3/4		73	144	144	72	36	36	36	18	
98-600	42.01	Bench Rack	27 3/4	8	21	24	24	12					
30-148	18.48	Steel Rail	48		3	11	11	6					

30-812 BIN CART

38 1/2" L x 24" W x 36 1/2" H Mobile Unit accepts all sizes of AkroBins.

The Bin Cart has a 16 gauge steel work surface top, forming a work area or repair station that can be moved wherever you need it. 4" rubber Wheel casters. (Rear casters lock to prevent rolling) Bins must be ordered separately see chart below. Holds up to 500 pounds. \$381.95



30-424 Mobile Kit

Mobile Kit Converts Stationary Racks (model 30-012 & 30-016) into mobile racks. Adds 5 1/2" to their height. Features reinforcing braces, Handle, & 4" rubber wheel casters. (Rear casters lock to prevent rolling)
 Bins must be ordered separately
 see chart below. \$73.60

Stock Number	Description	Price	Inside Dimen. Inches			Quantity of bins to fit Racks and Carts AkroBin Model Number.						
			L.	W.	H.	30-210	30-220	30-230	30-235	30-239	30-240	30-250
30-012	Rack, 2 Sided, 12 Rail	\$ 151.48	36	20	53	192	192			48	48	24
30-016	Rack, 2 Sided, 16 Rail	172.71	36	20	53			96	48			
30-424	Mobile Kit*	73.60										
30-812	Bin Cart	381.95	38 1/2	24	36 1/2	96	96	48	24	24	24	12

* Converts stationary racks (Models 30-012 and 30-016) to mobile racks

WELDED STEEL FRAME

An 18 drawer and 36 drawer model are available with frame finished in gray baked enamel. Drawers are molded of crystal styrene and fully transparent.

Stock Number	Description	Cabinet Size Inches			Drawers Per Cabinet	Drawer* Stock Number	Price
		W.	H.	D.			
17-018	Steel Frame	18	9-1/2	6	Drawers	20-902	\$51.69
17-136	Steel Frame	18	9-1/2	6	Per Cabinet	20-902	51.69

*Cross dividers furnished one per drawer. Additional dividers available by the package

ABS COPOLYMER FRAME

One piece frame is virtually unbreakable. pedestal bases fit securely into recessed tray tops allowing cabinets to be stacked together.

Stock Number	Description	Cabinet Size Inches			Drawers Per Cabinet	Drawer* Stock Number	Price
		W.	H.	D.			
16-136	ABS Frame	18-1/4	8-5/8	6-3/8	36	20-501	\$43.29
16-523	ABS Frame	18-1/4	8-5/8	6-3/8	23	(16)20-501, 20-901 (3)20-611	43.29
16-718	ABS Frame	18-1/4	8-5/8	6-3/4	18	20-901	43.29

*Cross dividers furnished one per drawer. Additional dividers available by the package

TRANSPARENT STYRENE DRAWERS

Window-clear styrene drawers allow you to see the contents inside.

Stock Number	Cabinet Size Inches			Drawer Stock Number	Price
	W.	H.	D.		
20-501	2-3/4	1-1/4	5-3/4	40-405	\$.70
20-502	2-3/4	1-1/4	5-3/4	40-501	.70
20-611	3-5/8	2-1/2	5-3/4	NA	3.47
20-901	2-3/4	2-1/2	5-3/4	40-901	1.28
20-902	2-3/4	2-1/2	5-3/4	40-901	1.28

MOBILE SMALL PARTS STORAGE

Mobile Cabinet Rack Holds any combination of up to 12 Akro-Mils Steel Cabinets (sold separately) providing access to as many as 336 drawers. Handles up to 500 pounds of small parts. Cabinet Rack System components are sold separately. Rack system components consist of: Rail Rack (30-012), Mobile Kit (30-424), a set of suspension straps and up to 12, 17" wide steel storage cabinets.

Stock Number	Cabinet Size Inches	Order Quantity	Price
30-012	12 Rail Rack (packed in 2 cartons)	1	\$151.48
30-424	Mobile Kit (4 casters & handle)	1	73.60
98-400	2 Suspension Straps for each cabinet	1 pair	9.11

Accommodates cabinet model no.'s 19-909, 19-715, 19-228, 19-416, 19-320, 19-109. photo shows complete system: 12-Rail Rack, Mobile Kit & Suspension Straps, and 12, 19-220 cabinets.

Mobile Kit 30-424

Converts Racks into mobile racks. Features reinforcing braces, handle, & 4" polyofin wheel casters (rear caster locks to prevent rolling).



1. Double-sided rail rack accommodates up to 12 steel cabinets.
2. Large rolling wheels for easy transport.
3. Durable steel frame holds up to 500 lbs.

